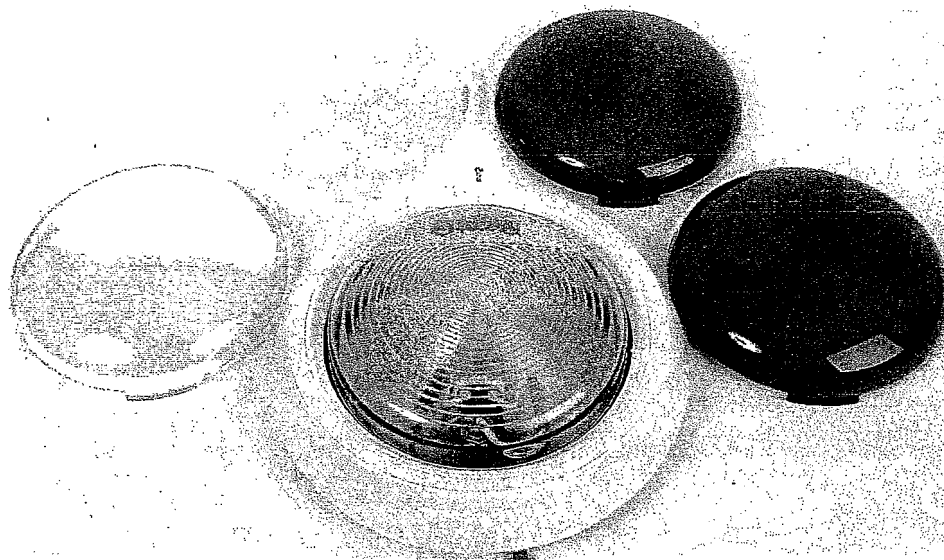


COMPACT SERIES UNDERWATER LIGHT



INSTALLATION AND OWNERS MANUAL

NOTE! Read this first before installing or operating your pool light.

INSTALLATION INSTRUCTIONS

This light is designed to operate as a water cooled unit, and, as such, the flow of water behind the light assembly **must not** be obstructed. **Under no circumstances should the light be turned on unless completely submerged in water.**

Electrical connections, positioning of junction boxes and transformers, must be in accordance with current Australian Standards AS3000 code, covering swimming pool installations.

It is our recommendation that **No Interim Connections** should be made between the light and its normal connection to that of the transformer, but rather the installer should fit a Compact light with a longer lead. Compact Underwater lights are supplied with varying lead lengths up to a maximum of 12m for 12 volt and 24m for 28v DC, so as to suit every installation.

Care should also be taken during backfilling of the pool to ensure that conduit lines are not crushed which could cause the electrical lead sheath to be cut and allow moisture entry. Damage to the light through this circumstance will void the warranty.

POSITIONING

When positioning the light, its ability to be easily accessed and serviced should be taken into consideration. The light is designed with this purpose in mind. As such, locate the light where it can be brought up to the top of the coping at poolside, **without** the need to lower the water-level, enter the pool, or cut the lead.

The centre line of the light should be located approximately 30cm (12") to 45cm (18") below the normal water level of the pool. It is important that the pool wall, immediately surrounding the light, be flat and vertical to a diameter of 25cm (10").

The wall ring should be positioned against the unfinished pool wall, with the marking "Top" in the 12 o'clock position. **The finished wall must lay level with the front face of the wall ring to a diameter of 25cm (10").**

The mounting skirt ring is then screwed to the wall ring with the front lug at the 6 o'clock position.

Feed the cable through the conduit, retaining sufficient free cable behind the light assembly to facilitate future service above water level. Normally 1.2 metres (4ft) is sufficient. This extra cable is secured by the retaining brackets at the rear of the light.

On concrete pool installations it is recommended that once sufficient lead has been allowed for servicing, the installer apply silicone into the conduit around the lead, to prevent, where possible, the water from tracking along the conduit.

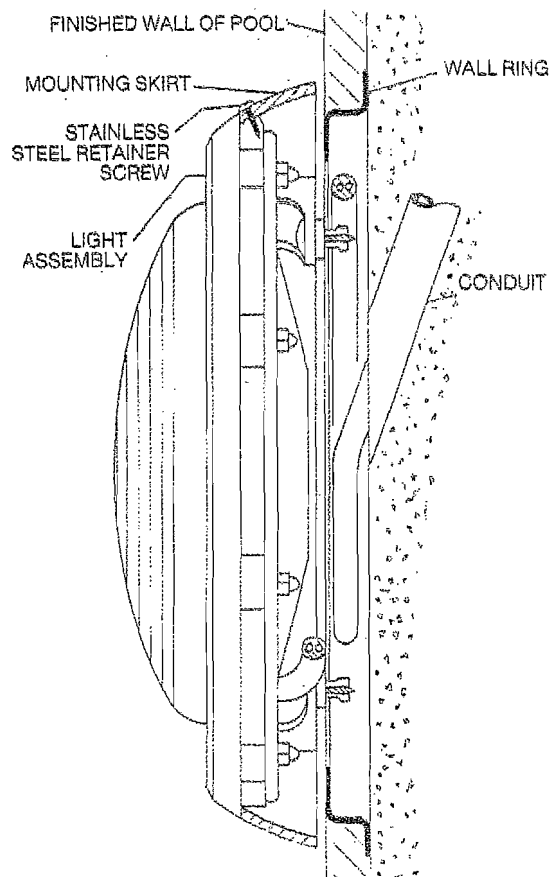
The light assembly is then located on the bottom lug of the mounting skirt ring and clipped into the corresponding slot at the top of the mounting skirt and secured by a stainless steel screw.

OWNERS OPERATION:

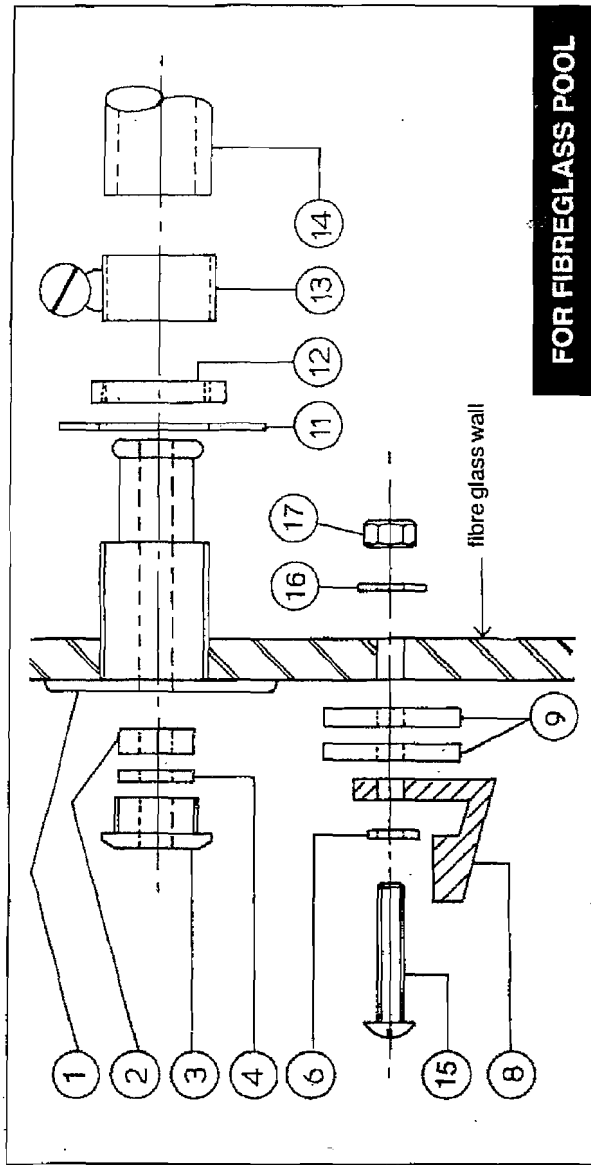
1. Be sure on completion of the installation your electrician checks all electrical connections. Your electrician should also check and verify the voltage supply on the primary and secondary side of the transformer.
2. To ensure maximum performance and benefit from your new Compact Underwater light, we recommend that the light be used on a **regular basis** ie a minimum usage of once a week. More frequent use will prevent "tracking", thereby providing longer lamp life. To ensure a longer lamp life, do not operate the light for short periods.
3. **Lamp Replacement.** Unscrew the stainless steel screw at the top of the mounting skirt. Insert screwdriver blade into the top slot and twist. Unit can then be removed by unwinding the cable from the special retaining brackets mounted on the rear of the light. Remove rear reflector plate and unscrew old lamp. Care should be taken when fitting new lamp to avoid direct hand contact with the glass component. If accidentally touched, clean with methylated spirit before re-assembly. Replace lamp, ensuring that the broad face of the filament faces outwards. If the unit has been in service for more than 12 months we recommend that the lens "O" ring seal should also be replaced when replacing the globe. Replace the reflector plate making certain that the lamp is in a vertical position relative to the lens and top of the face ring. Replace nuts on screws and tension until finger tight. Final tensioning is on a diagonally opposite method to ensure even pressure. Do Not over tighten. The return edge on the reflector plate should just contact the bosses on the rear of the face ring.
4. **Coloured clip on lens replacement.** Your coloured clip on lens can be easily changed without the need to bring the light to the surface. By pushing down and squeezing in at the same time at the top of the light, will release the lens and then simply twist the bottom to release the bottom clip. The new colour lens should be located in the bottom clip, and then push the top clips into position.
5. We recommend annually that the light be inspected and maintained for maximum performance.

The light and lens "O" ring in particular are designed as a dry sealing unit. Therefore the use of sealing agent/compound is not necessary. Under no circumstances should petroleum based agent be used, eg; Vaseline, as this will deteriorate the O ring. If an agent is to be used then a silicone based material is recommended, eg; silicone spray.

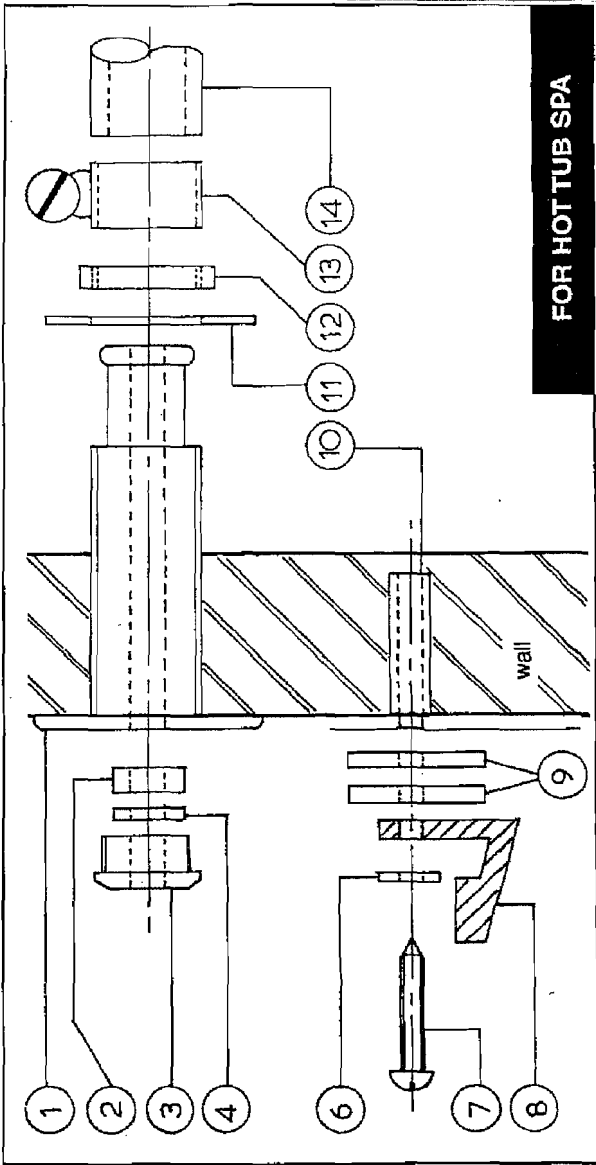
WARNING: Do not operate the underwater light unless the unit is completely submerged in water, otherwise damage will result and warranty voided.



FOR IN GROUND CONCRETE POOL



FOR FIBREGLASS POOL



FOR HOT TUB SPA

MONARCH POOL SYSTEMS

MANUFACTURERS AND DISTRIBUTORS OF HIGH QUALITY POOL & SPA EQUIPMENT

WA (HEAD) OFFICE: 10-12 Kembla Way Willetton WA 6155
 NSW OFFICE: 16 Centenary Avenue, Moorebank NSW 2170
 QLD OFFICE: 76 Northlink Place Virginia QLD 4014
 SA/NT OFFICE: 3 / 4 Cord Street, Dudley Park SA 5008
 VIC/TAS OFFICE: 6A Brough Street, Springvale VIC 3171

Ph: (08) 9457 9633 Fax: (08) 9457 9229
 Ph: (02) 9824 3724 Fax: (02) 9601 8621
 Ph: (07) 3266 4711 Fax: (07) 3266 4722
 Ph: (08) 8342 6205 Fax: (08) 8342 6574
 Ph: (03) 9546 4937 Fax: (03) 9546 8127

EMAIL: info@monarchpoolsystems.com
 WEB: www.monarchpoolsystems.com