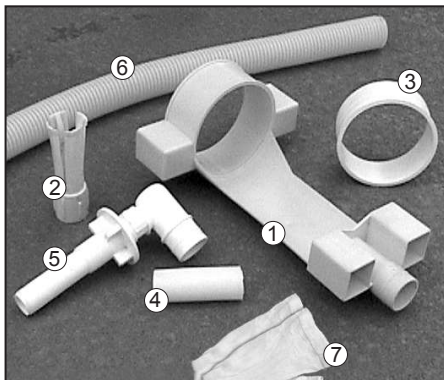


## Assembling your Pool Croc

### What's inside?

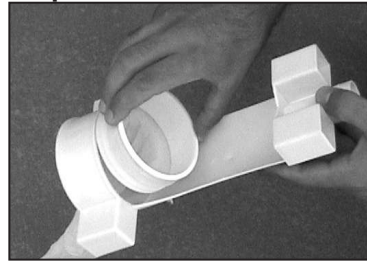


### Step 1



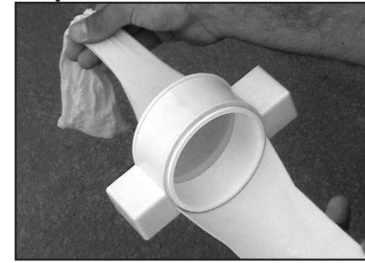
Pull the opening of the sock over the outside of the sock ring.

### Step 2



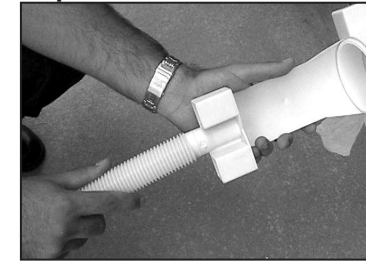
Sock first, feed the sock ring through the head unit from the front.

### Step 3



Push the sock ring firmly into the head unit so that the sock is secure.

### Step 4



Attach the flexible hose to the head unit. Put the assembled Croc to one side.

①Head Unit ②Expander Fitting ③Sock Ring ④Rubber Sleeve ⑤Elbow ⑥Flexible Hose ⑦ Sock

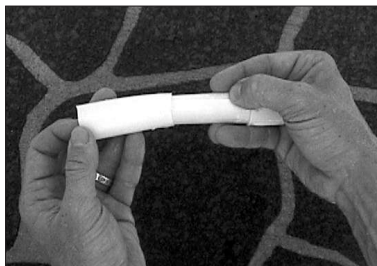
Extra Hose and Pool Croc accessories are available from your local pool shop.

## Installing your Pool Croc



Does the expander fitting fit easily into the eye of the return outlet?

**NO**



Pull sleeve over the expander fitting.



**YES**

Insert the elbow into the expander fitting.



Holding the expander firmly with one hand, screw the elbow into the expander fitting.



Attach the hose of the assembled Pool Croc to the elbow. Switch on pump.



Unscrew the outlet and remove eyeball. Screw the outlet back on. Return to the beginning of the assembly instructions.

### FREQUENTLY ASKED QUESTIONS:

Can I use the Pool Croc in a saltwater pool? Yes! Pool Croc can be used in any chlorinated or saltwater pool.

How long will it take for the Pool Croc to clean my pool and can I leave it in the water continuously? Because the Pool Croc works off a venturi system it is an ongoing process and should be left in the pool to operate whenever the pump is switched on.

What can I do if there is too much water escaping from the outlet? If you experience this problem, simply roll the sleeve back over on the expander fitting so it forms a double layer.

My outlet pipe is too big and the expander fitting does not grip the sides of the pipe? This is quite easy to solve. Simply roll the sleeve back and add an O Ring (not supplied) to the end of the expander. This will assist the expander to grip the sides of the pipe.

The thread of the elbow is not engaging in the expander fitting, what do I do? This happens when there is tight compression on the expander fitting. If you cut a few mm's from the tip of the elbow, it should engage easily.

I have two return outlets, what should I do? Most of the larger pools have more than one outlet. You can either restrict the flow in the one outlet so your Pool Croc is more effective on the stronger outlet, or you can use a Pool Croc at each outlet.

My bottom cleaner moves close to the Pool Croc, is this a problem? The Pool Croc is more effective when the bottom cleaners hose shepherds surface debris towards it. The bottom cleaner will not dislodge a properly attached Pool Croc.

If I have any problems who do I contact? Please contact our customer care line on **1300 136 258**